


Since 1940

WISCONSIN ENERGY *Cooperative* NEWS

October 2022

PIERCE PEPIN
COOPERATIVE SERVICES

A Touchstone Energy® Cooperative 

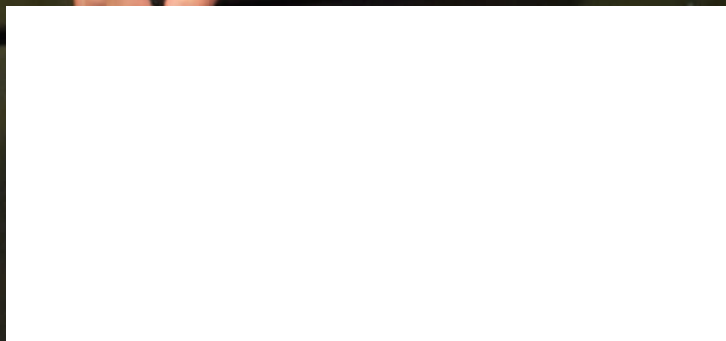
RESOURCEFUL RESCO

CO-OPS COPE WITH
SUPPLY-CHAIN SLOWDOWN

INSULATION MADE EASY

FALLING FOR ART

CELEBRATE CO-OP MONTH WITH PPCS





Nate Boettcher,
President and CEO

A Quick ROUND UP for Co-op Month

October is Cooperative Month. Cooperatives were created to serve their communities, and this is restated in cooperative principle #7 which is Concern for

Community. Without our members, the cooperative does not have a purpose. We are here to serve our member-owners. Cooperatives also serve their communities in many ways. A vibrant, engaged, and thriving community raises the tide for all ships. When our communities thrive, the fundamental quality of life improves all around us.

PPCS created Pierce Pepin Cares Foundation, a non-profit 501(c)3 in 2021 to be the primary sponsor of our Operation Round Up® program. For 29 years, PPCS has been involved in Operation Round Up and in the past year, we surpassed \$500,000 in total donations to our communities. If you're like me, you've started to notice that just about everywhere you go, you are asked to "Round Up." Numerous retail stores, restaurants, fast food chains, and grocery stores now ask you if you want to round up your bill for charity. The original Operation Round Up program was started by Palmetto Electric Cooperative in South Carolina. Since 1989, Palmetto has allowed other cooperatives to use its program to benefit their members.

It ruffles my feathers when I see other entities use the term "Round Up" as part of their programs. I am sure most of these entities mean well, but I question how much of their

money goes back to the local community. This is where our program thrives—100% of the contributed amounts goes to entities that are part of our community. 100% of the money is returned through these grants. Pierce Pepin Cares does not keep a single penny for any overhead expenses or other costs associated with running the program. Our nine-member board of directors, one employee, and one community member assist with reviewing applications on a quarterly basis.

We encourage members to participate in Operation Round Up. We understand that you are being constantly asked to round up every time you go to a store. However, with our program, on average members will contribute \$6 a year with a maximum dollar amount of less than \$12. Just think,

Just think, if every member participated in this program, approximately \$45,000 would be returned to our communities.

if every member participated in this program, approximately \$45,000 would be returned to our communities. **Call our office if you are not participating and we will automatically round up your bill to the next dollar amount.**

We hope you take a minute to stop by, call us, join our social media pages, or send us an email. We would love to hear from you. Thank you for being a member-owner, thank you for being a part of our community, and thank you for helping us to serve you.



October is National Co-op Month
Proud to be your trusted energy partner.

We're celebrating all month long!

- Oct. 3-7: Stop in for "Thank You Bunches" seed packets
- Oct. 14: Coffee at the Coop and Flu Shot Clinic from 8 to noon
- Oct. 17-21: Stop in for S'Mores goodie bags
- Oct. 29: Bring the kids for story time with a lineman at 4:00 p.m. and trick or treat with us from 4:30 to 5:30 p.m.

Enter our prize drawing weekly, in person or online at www.piercepepin.coop.
Four gift baskets (each over \$200 value) will be given away.

NOVEMBER 15
is the Deadline for
Underground Service

If you are thinking about installing a new service or modifying your existing service from overhead to underground, contact our operations department as soon as possible. Once the cold weather arrives and frost sets in, usually by November 15, PPCS cannot guarantee the completion of any underground work.

PPCS ENABLES EV TOURISM IN PIERCE COUNTY

PPCS hosted two member events on August 27 and September 2 to celebrate the installation of CHARGE electric vehicle charging stations at Vino in the Valley and Belle Vinez Winery. Members enjoyed a buffet, wine tasting, a fun fact game, and prize drawings. Representatives

from Dairyland Power Cooperative, and the Ellsworth and River Falls chambers of commerce assisted with ribbon-cuttings at each site. The locations for these chargers were chosen to help encourage tourism in Pierce County by electric vehicle drivers.



Belle Vinez Winery





PPCS WELCOMES RUBY'S PANTRY

PPCS will be opening its doors—garage doors, that is—to welcome the volunteers from Bethel Covenant Church who distribute food through Ruby's Pantry. The food distribution events are held on the first Saturday of each month from 10 to 11:30 a.m. Our site will be used for drive-through distribution in November through February events, and possibly March.

More information can be found through the group's Facebook page, Ruby's Pantry – Ellsworth, WI at Bethel Covenant Church, by email at office@bethelcov.org, or by calling 715-792-2397. The cost to participate is \$25 per share.

Vino in the Valley



SCHOLARSHIPS

PPCS will award three \$1,000 scholarships to high school seniors graduating in spring 2023. Scholarship details and application instructions are available on our website, www.piercepepin.coop, under My Community. Applications must be postmarked by December 16, 2022. For more information, contact Charity Lubich at 715-273-4355, 800-924-2133, ext. 151, or clubich@piercepepin.coop.

YOU should be a DIRECTOR

Join us for a director candidate information session.

- WHO:** Cooperative members interested in running for a seat on the board of directors.
- WHAT:** Basic candidate information including: qualifications, duties, terms & compensation, expectation of directors, and nomination process.
- WHEN:** Thursday, October 20, at 6:00 p.m.
- WHERE:** W7725 US Highway 10, Ellsworth
Arrangements can be made to participate remotely.
- RSVP:** Call Laure at 715-273-4355, ext. 113 or email landrle@piercepepin.coop by October 14 to reserve your seat.



Our CO-OP Builds COMMUNITIES

October is Co-op Month and a time to recognize the accomplishments and contributions of member-owned companies across America. As your local energy provider, Pierce Pepin Cooperative Services is proud to be bringing broadband service to this region through our subsidiary, SwiftCurrent Connect.

Thanks for choosing SwiftCurrent Connect for your internet services. You're part of this co-op's success story.



SWIFTCURRENT[®]
CONNECT
BROADBAND POWERED BY PPCS
W7725 U.S. HWY 10, Ellsworth, WI 54011
715-350-7033




Dimension Group © 2022

PIERCE PEPIN COOPERATIVE SERVICES

A Touchstone Energy[®] Cooperative 

W7725 U.S. Highway 10, P.O. Box 420
Ellsworth, WI 54011-0420
715-273-4355 • 800-924-2133

info@piercepepin.coop • www.piercepepin.coop

Follow us on Facebook, Twitter, and Instagram   

Office Hours: Monday–Friday, 8 a.m.–4:30 p.m.

Power Outages and Emergencies: 800-927-5705

Nate Boettcher, President & CEO

Board of Directors

- District 1.....Gerald Drier
- District 2.....Edward Hass
- District 3.....Brian Berg
- District 4.....Joseph Bacon
- District 5.....Ann Young
- District 6.....Ginny Huber, secretary/treasurer
- District 7.....Roger Wiff, chairman
- District 8.....Brian Bergsens, vice chairman
- District 9.....Daniel Reis