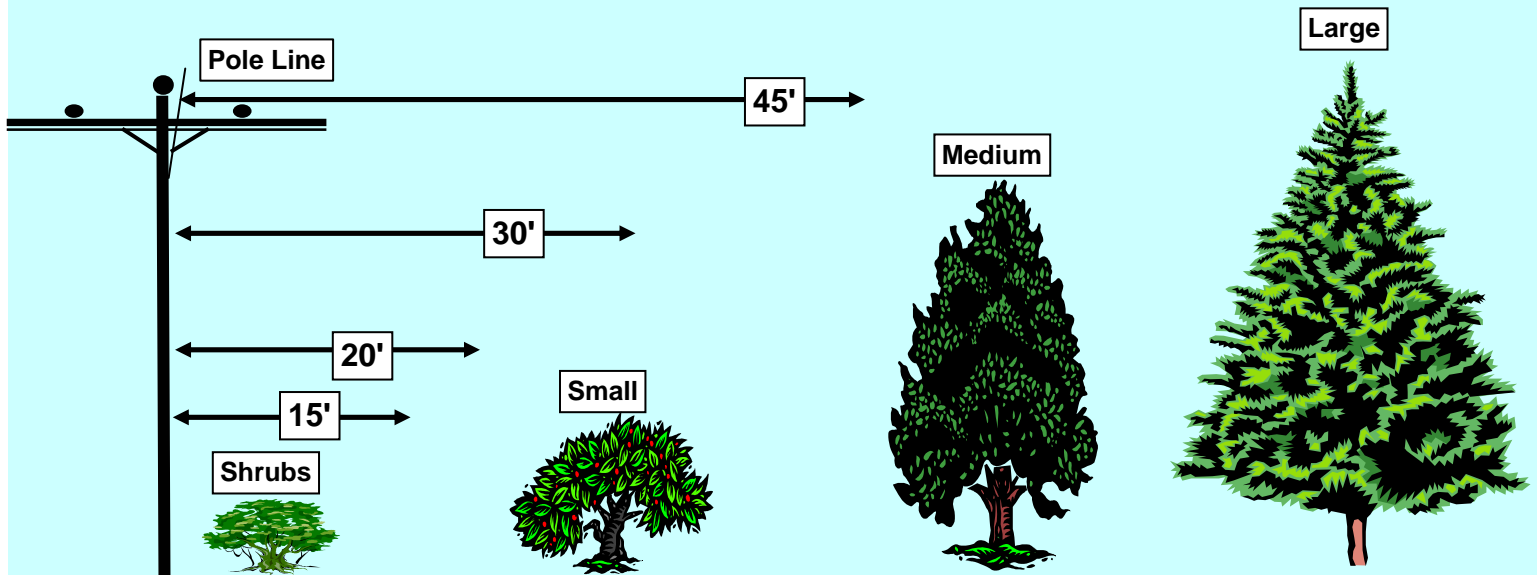


# Selected Tree Varieties for Planting near Overhead Power Lines



## Shrubs (4'-10')

Arrowwood  
Azalea  
Burning Bush  
Bush Honeysuckle  
Caragana  
Chokeberry  
Cotoneaster  
Cranberry Bush  
Currant  
Dogwood  
Hydrangea  
Juneberry  
Lilac  
Ninebark  
Potentilla  
Sumac

## Small Trees (10'-15')

American Plum  
Amur Maple  
Flowering Crabapple  
Flowering Dogwood  
Hawthorn  
Eastern Red Cedar  
Russian Olive  
Canada Cherry  
Nankin Cherry  
Ironwood  
Mountain Ash  
Techny & Pyramidal Arborvitae

## Medium Trees (30'-40')

Ash, Marshall Seedless  
Birch, Paper & River  
Butternut  
Honey Locust:  
    Sunburst  
    Shademaster  
    Skyline  
Littleleaf Linden  
Norway Maple

## Large Trees (50'-70')

Basswood  
Bur Oak  
Pin Oak  
Elm  
Sugar Maple  
Hackberry  
Ginkgo  
Black Walnut  
Catalpa  
Pines:  
    Austrian  
    Red  
    Scotch  
    White  
    Spruce

15' minimum →

20' minimum →

30' minimum →

45' minimum →